



**UNIVERSITY OF VIRGINIA**  
**TRACK & FIELD PRECINCT MASTER PLAN**



## EXECUTIVE SUMMARY



The new track will create a number of advantages for the Virginia's Men's and Women's track & field program. Of primary importance is that the new layout features a wider turn radius making it a faster track and consistent with the premier tracks in the country. This layout also reduces strain on joints and ligaments both for training and competition. The new track also creates a larger area in the infield allowing for a more efficient and safer layout for all for all field and throwing events. New lights will allow for increased availability for both meets and practice and a new scoreboard will provide spectators with updated scoring throughout a meet.

Team facilities will include new locker rooms, meeting space and training space to maximize opportunities for student-athlete development during practice and workouts. Permanent stands with a capacity of 1,500, spectator facilities, and a permanent meet operations booth will allow the University to host and run high quality meets and provide spectators a better experience. The overall facility will enhance recruiting efforts for the track & field program and allow the University to attract high school and collegiate track meets.

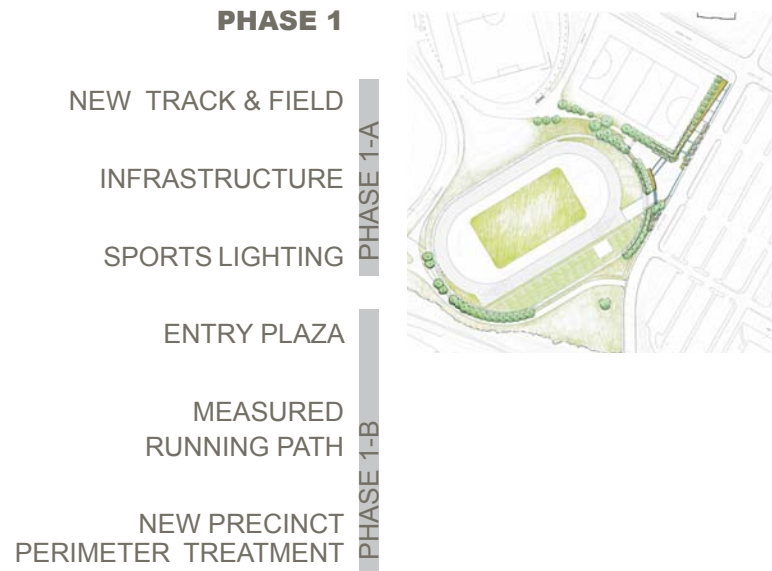
The improvements include a separate training/running path around the outside of the competition track that will feature a custom surface with extra resilience to minimize impact and allow student-athletes to train with minimal strain to joints and ligaments.

The new facility features a colonnade along the first turn which is a feature throughout the University and has been continued in the other major athletics venues at Scott Stadium and the John Paul Jones Arena.

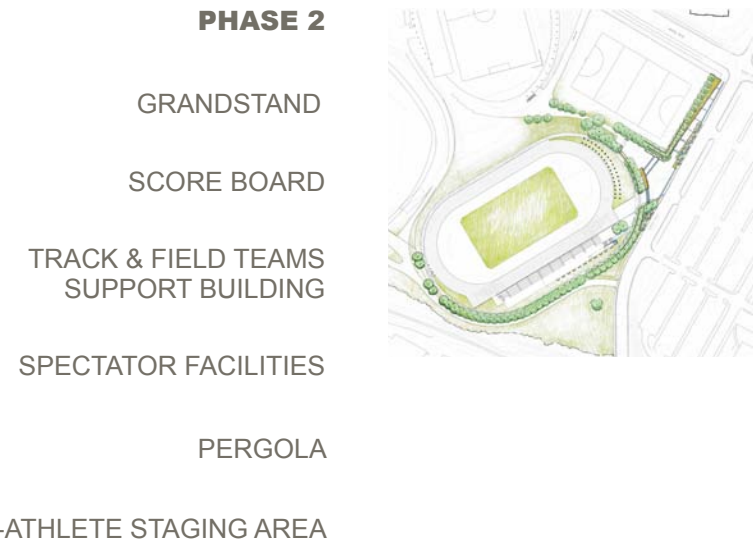




# PROPOSED PRECINCT PLAN



Phase 1 consists of site grading, the new track and track sub-base, as well as all new field event amenities. New electrical infrastructure will be brought to the site, and sports lighting for the entire track & field complex will be installed. An entry plaza, ticketing building, and entrances will be constructed to serve the track & field facility, Klöckner Stadium and Davenport Field. For student-athlete training, warm up, and cool down, a measured running path built outside of the track will provide a soft cushioning surface, minimizing impact and strain on student-athletes. A perimeter fencing system will enclose and separate the track & field facility for general security and for ticketing on event days. Landscape around the track and new entry plaza will create a signature facility easily seen from Copeley Road.



In Phase 2, the new track & field grandstand will provide spectator seating while housing spectator facilities and team support facilities under the concourse. The new track & field grandstand will have partial roofing (similar to Klöckner Stadium and Davenport Field). A digital scoreboard to display times, results, records, etc. will be added at the west end of the track. Team facilities will include locker rooms, training, and meeting space. A significant feature of the facility will be the colonnade along the first turn of the track which will connect the aesthetic of this venue with Scott Stadium and JPJ Arena, while also recalling UVa's first track & field stadium at Lambeth Field.

## PERSPECTIVE RENDERINGS - PHASE 2



A



E



B



F



C



G



D



H



A. View to entrance plaza

B. Aerial view to entrance plaza

C. View approaching across the RR bridge on Copeley Road. Aerial looking back towards the entrance

D. Aerial looking back towards the entrance

E. Lower aerial looking back towards the grandstand

F. View of the straightaway alongside the grandstand

G. View from the grandstand concourse

H. View looking back into the first turn showing the Pergola



# PERSPECTIVE A ENTRY PLAZA



Street level view into the new entry plaza.

The colonnade is clearly visible as is the view to Davenport Field and Klöckner Stadium beyond.  
The plaza will serve as the entrance for all three facilities, and will include a new ticket booth.



## PERSPECTIVE B ENTRY PLAZA



Aerial view of entrance plaza.

The new landscape is shown, as is the perimeter fencing system separating the track & field stadium as a separate venue. The landscape helps create the overall setting of three separate competition venues set within a park.





PERSPECTIVE C GRANDSTAND FROM COPELEY ROAD



View from Copeley Road looking at the track & field stadium from the railroad bridge showing the back of the grandstand and team facilities.



PERSPECTIVE D AERIAL FROM WEST



Birdseye view of the track & field stadium from the west.



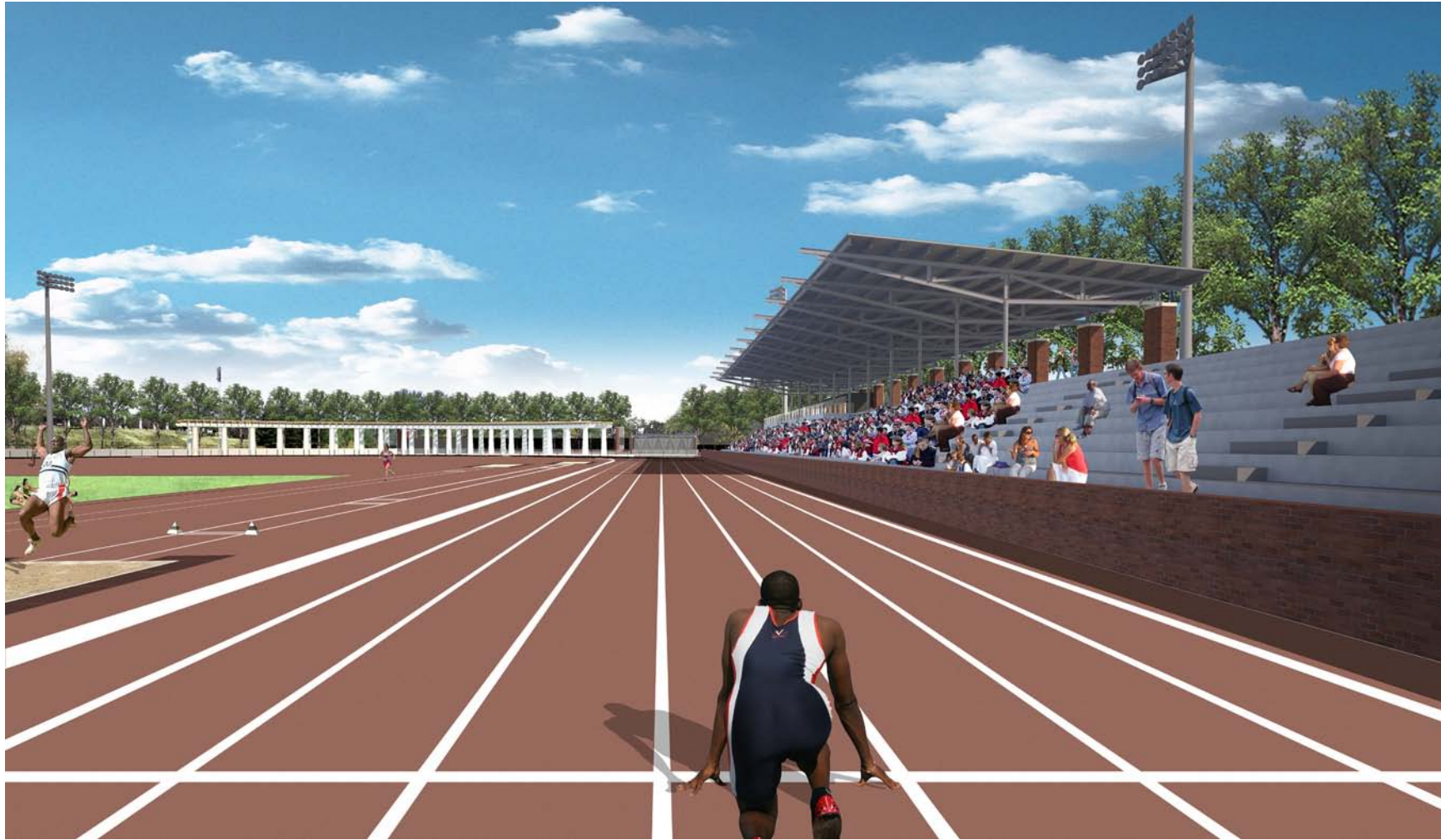


# PERSPECTIVE E



View from the west toward the grandstand and the colonnade along the first turn.

## PERSPECTIVE F STRAIGHTAWAY TOWARD COMMON FINISH LINE



View down the straightaway showing the new grandstand and colonnade.

The grandstand is immediately adjacent to the track and designed to maximize the fan and student-athlete experience and interaction. The grandstand roof provides partial protection from rain and sun.





## PERSPECTIVE H FIRST TURN OF THE TRACK



View looking back into the first turn with the colonnade. The inset shows a track meet held at Lambeth Field in the early years of the University.

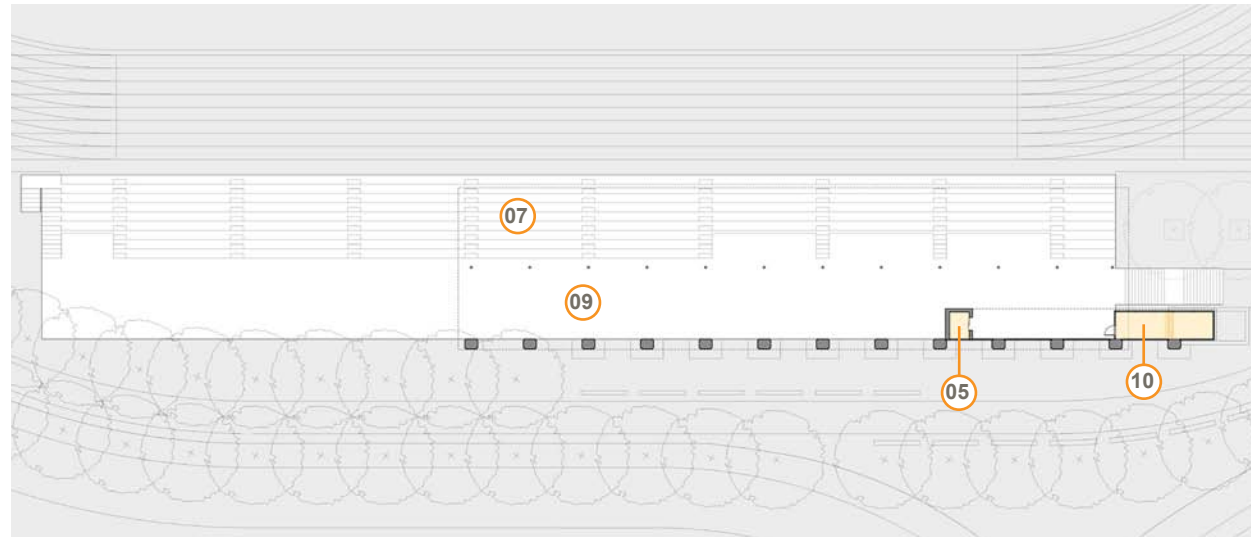
The new facility features a colonnade along the first turn which is a feature throughout the University and has been continued in the other major athletics venues at Scott Stadium and the John Paul Jones Arena.

## CONCEPTUAL BUILDING PLANS - PHASE 2

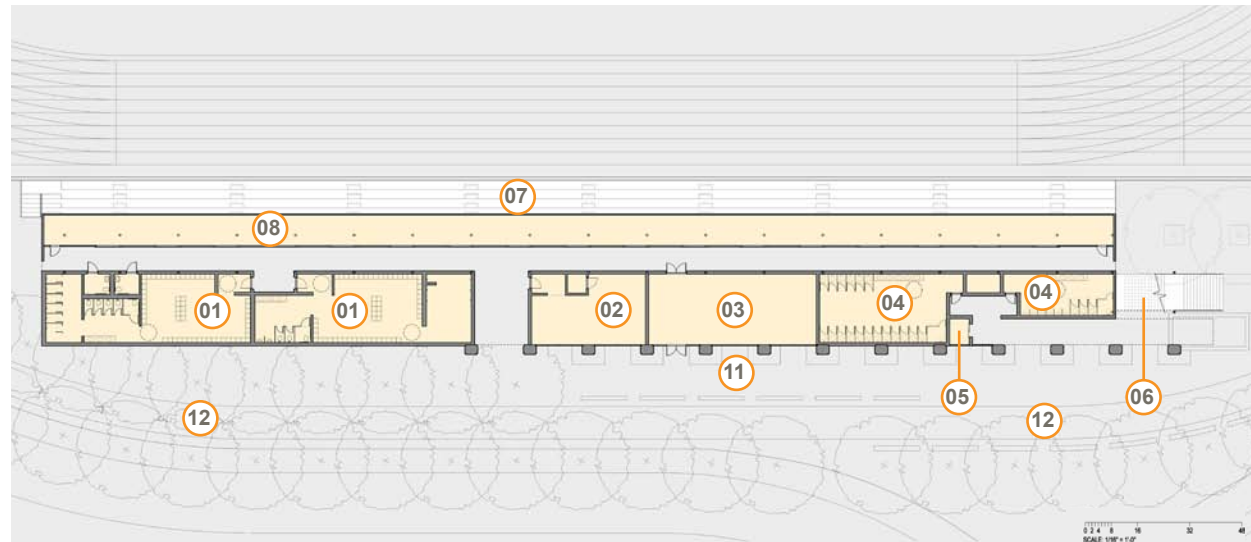
Team facilities will include new locker rooms, meeting space and training space to maximize opportunities for student-athlete development during practice and workouts. Permanent stands with a capacity of 1,500, spectator facilities, and a permanent meet operations booth will allow the University to host and run high quality meets and provide spectators a better experience. The overall facility will enhance recruiting efforts for the track & field program and allow the University to attract high school and collegiate track meets.

### PRIMARY LANDSCAPE + BUILDING SPACES

- 01 Locker + shower rooms
- 02 Training room
- 03 Team meeting room
- 04 Spectator facilities
- 05 Elevator
- 06 Main stair
- 07 Grandstand seating
- 08 Track & Field storage
- 09 Concourse
- 10 Meet Operations Booth
- 11 Student-Athlete Staging Area
- 12 Training/Running Path



LEVEL 2 - CONCOURSE LEVEL



LEVEL 1 - GROUND LEVEL

